

# AZ-Touch MKR (mk II)

Top wall enclosure with touchscreen for Arduino MKR & Nano

---



## Features enclosure and pcb:

- top wall mounting enclosure
- 2.8 inch (7,10cm) tft screen with 320 x 240 pixel resolution
- SPI display controller ILI9341
- Resistive touch with SPI touch controller XPT2046
- Integrated 5V/1.7A voltage regulator (Vin 9...35V DC)
- Integrated prototyping area
- 4-pin removable terminal block for prototyping area & power supply
- Marked and connected GPIO & power pins beside the proto area
- Integrated piezo beeper
- Plug-in positions for Arduino MKR or Arduino Nano 33 / BLE / RP2040 boards
- Plug-in position for optional Arduino MKR shield
- Vented cover to allow through air flow

# AZ-Touch MKR (mk II)

## Top wall enclosure with touchscreen for Arduino MKR & Nano

---

### Enclosure:

- Outside dimensions: 120mm x 80mm x 35mm (W x H x D)
- Breadboard area: 43mm x 39mm (W x H)
- Material: ABS
- Finish top shell: white
- Finish bottom shell: white

### Features voltage regulator:

- Input voltage: 15 – 30V DC
- Output voltage: 5V / 1.4A DC

### Applications :

- Home automation
- Door access and door control
- HVAC applications
- Internet of Things (IoT)
- Intelligent wireless light switch
- Monitoring of sensor data
- Metering
- Intruder alarm systems

# AZ-Touch MKR (mk II)

Top wall enclosure with touchscreen for Arduino MKR & Nano

---

**Compatibility :**

## Arduino Boards

MKR Zero



Wifi 1010



FOX 1200



Nano 33 IoT



Nano 33 BLE



WAN 1310



GSM 1400



NB 1500



Nano RP2040



Nano 33 BLE SENSE



**Attention:**

Either an Arduino MKR or an Arduino Nano board can be plugged in!

**NOT compatible with the Arduino Portenta and the classic Arduino Nano (with ATMEGA)!**

## Arduino MKR Shields

MKR 485



MKR ENV



MKR MBUS



MKR CAN



MKR MEM



# AZ-Touch MKR (mk II)

Top wall enclosure with touchscreen for Arduino MKR & Nano

---

## Part number table:

Part-No.	Version	Features
ARTHME	DIY Kit	<ul style="list-style-type: none"><li>- diy kit version</li><li>- pre-assembled pcb (SMT parts only)</li><li>- THT parts</li><li>- 2.8 inch (7,10 cm) touchscreen</li><li>- milled enclosure</li></ul>
ARTHMA	Finished device	<ul style="list-style-type: none"><li>- pre-assembled and tested device</li></ul>



**ARTHME**  
(diy kit version)



**ARTHMA**  
(assembled device)

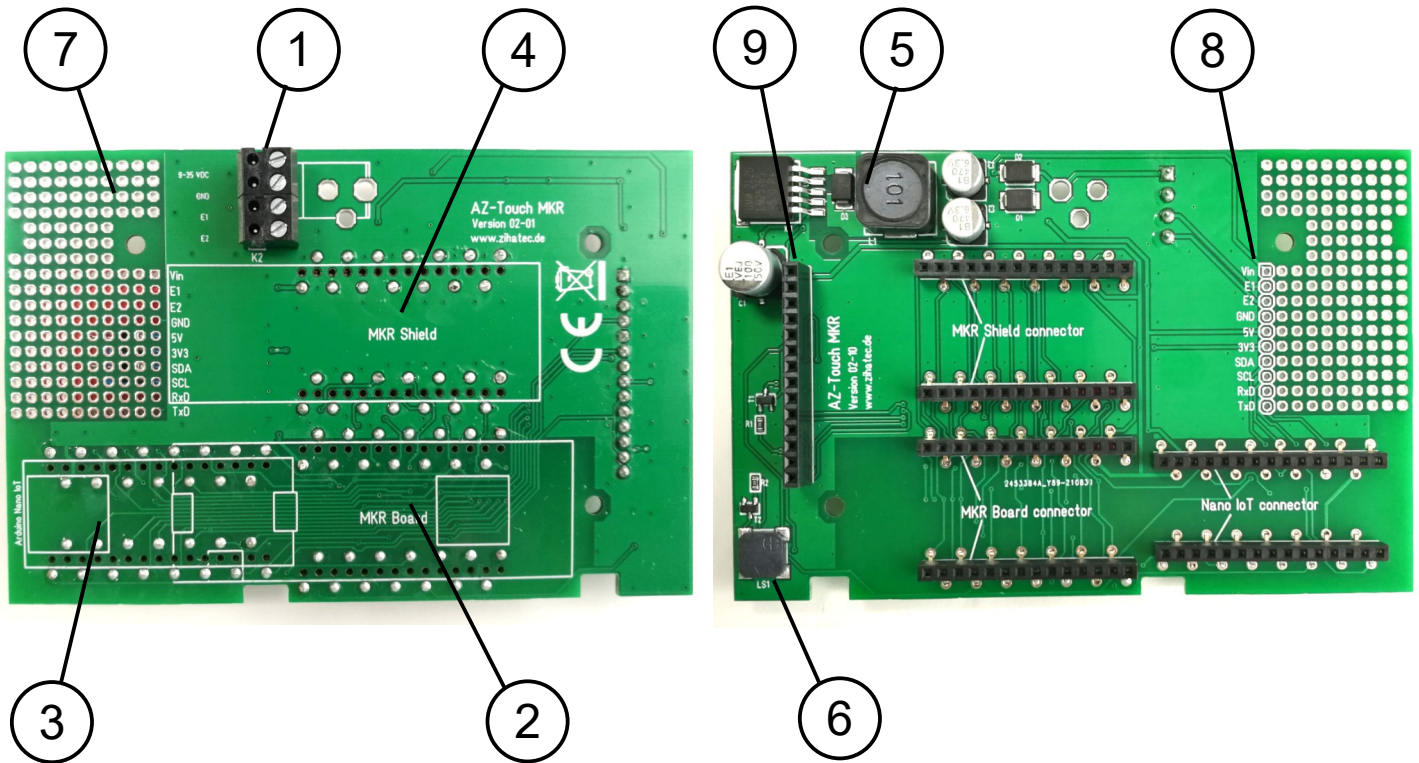
# AZ-Touch MKR (mk II)

Top wall enclosure with touchscreen for Arduino MKR & Nano

Features main board:

Back side

Front side



- ① Terminal for power supply & proto board
- ② Plug-in slot for Arduino MKR board
- ③ Plug-in slot for Arduino Nano board
- ④ Plug-in slot for Arduino MKR shield
- ⑤ Voltage regulator (9..35V Vin / 5V Vout)
- ⑥ Piezo beeper
- ⑦ Breadboard / proto board area
- ⑧ GPIO pins for proto board
- ⑨ Header for touch screen